

Staff Report

By Alec Brebner, AICP – Executive Director

Collection System Expansion

The Region 2000 Services Authority implemented a gas collection system beginning in 2015 to control odor at the Livestock Road facility. Cell #4 of the landfill has been closed, and Cell #5 is receiving municipal solid waste. The gas collection system should now be expanded into Cell #4.

SCS Engineers have been responsible for installation of previous phases of the gas collection system. At staff's request, they propose to continue this work under Amendment 5 to that comprehensive agreement between the Region 2000 Services Authority and SCS Engineers for design, construction, and operation of a landfill gas collection and control system at the Livestock Road Landfill. The proposal is included in the agenda packet.

The total engineering and construction cost of the project is estimated at \$361,800. The request of the Authority board is to amend its FY2025 budget, as approved, by adding a line item on Schedule 2 – an expense to the Closure and Post-Closure Reserve for Livestock Road in the amount of \$361,800.

Resolution for Rezoning & Special Use Permit Applications

A narrative and plats for a rezoning request and special-use permit application to Campbell County Government are included together with a lateral expansion proposal in the packet. A proposed resolution is further included, which would direct staff to submit these application materials to Campbell County and pay any applicable fees. Should the resolution pass, the expected timeline is that the Campbell County Planning Commission would review the requests at its meeting on December 2, 2024, and make a recommendation to the Campbell County Board of Supervisors, which would take up the recommendation at its regular meeting on January 7, 2025.

Financing Reimbursement Resolution

The recommendation of bond counsel to the Region 2000 Services Authority has been to adopt a Reimbursement Resolution that permits the Authority to reimburse itself with monies from a later, tax-exempt financing for the project listed in the resolution (i.e., lateral expansion). It does not, however, require the Authority to borrow at this time or, if borrowed in the future, for the amount estimated.

Under Federal tax rules, an issuer of tax-exempt bonds such as the Authority may not reimburse itself from proceeds of a tax-exempt financing for monies expended on capital projects unless the requirements of U.S. Treasury Regulations Section 1.150-2 are satisfied. These IRS Regulations generally provide that a later reimbursement is allowed on projects for which an issuer has adopted a "declaration of intent" to finance, otherwise known as a "Reimbursement Resolution", which identifies the capital project to be financed and the maximum amount of tax-exempt financing contemplated.

Any expenditures related to the listed capital projects actually paid for from the date 60 days prior to adoption of the resolution, for a period of 3 years from the adoption date – or 18 months from the date the improvements are placed in service – may later be reimbursed to the Authority from a tax-exempt bond financing.

Adoption of the Reimbursement Resolution does not require that the capital project listed be financed with tax-exempt bonds, but it simply gives the Authority the option to reimburse itself. This type of resolution is traditionally adopted early in the capital improvement process to allow for the greatest flexibility for government issuers.

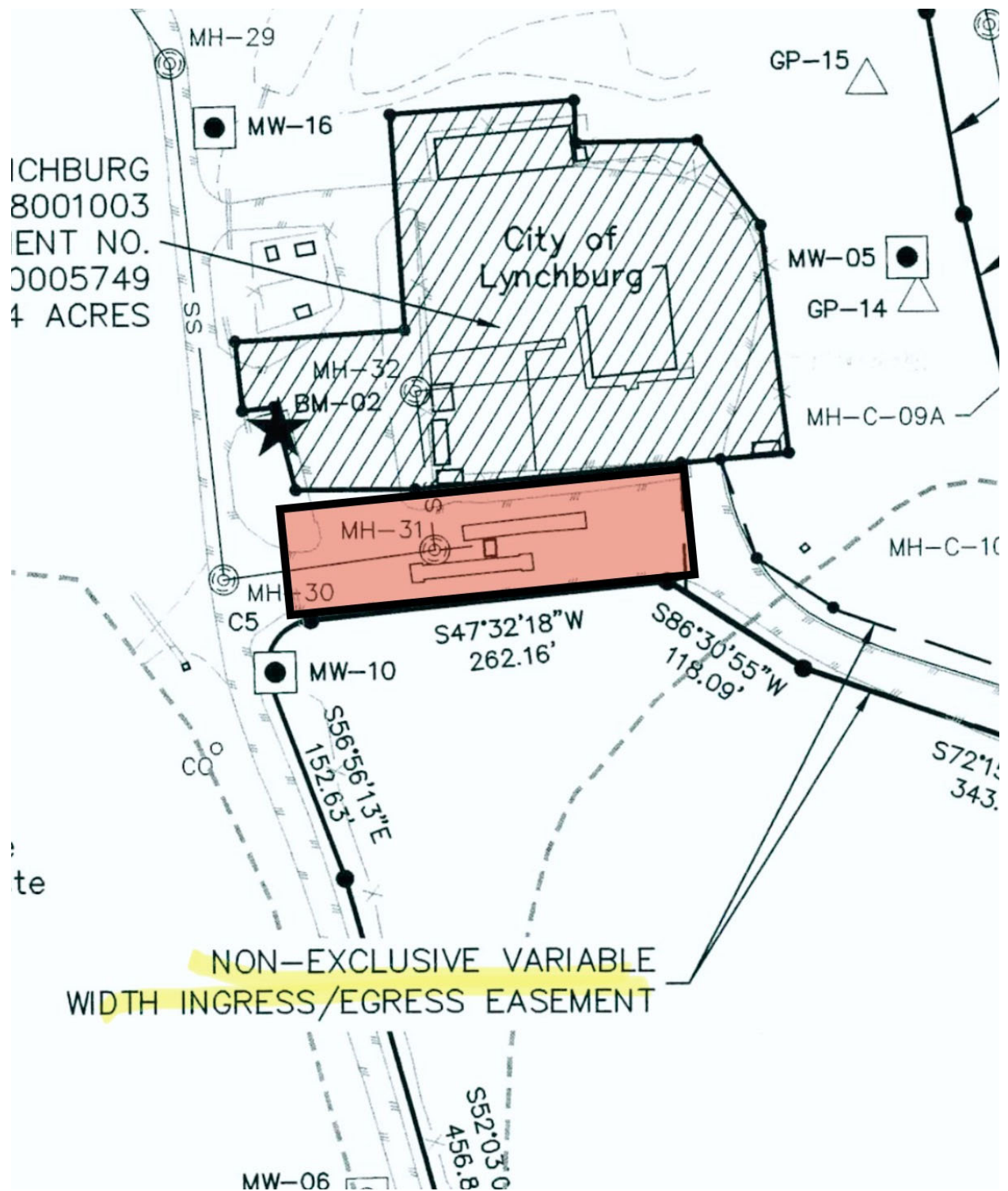
Real Estate Transfer to City of Lynchburg

The Region 2000 Services Authority owns land on which a scalehouse stands at the Concord Turnpike Landfill. While this landfill is closed and capped, the City operates a convenience center on land it owns adjacent to the facility. The image below depicts the City-owned parcel with hatching. The scalehouse site is rendered in pink. (A plat dating to 2016 is also included in the packet.)

The City makes regular payments to the Region 2000 Services Authority to fund a Region 2000 employee to man the scalehouse. The Region 2000 scalehouse operator assists the City by weighing the waste and ensuring that inappropriate waste like construction debris does not enter the convenience site.

The City would like to assume operation of this scalehouse and staff it with a City employee. The City currently owns the scalehouse and the scales. The ingress/egress easement may need adjustment to ensure access for the Authority.

Staff recommends transferring the property to the City for a negligible price. Staff would propose that the City would be responsible for typical buyer's costs like surveying and legal fees. Both parties benefit from reduced administrative time and costs with simplified organizational oversight on-site at Concord Turnpike. Region 2000 Services Authority staff will oversee the closed landfill and maintain the property as it does now. The request of the Authority board is to authorize staff to proceed with the real estate transfer as depicted to the City of Lynchburg.



Organizational Reports

Alec Brebner will report progress on the Authority's annual audit. Sandy Dobyms will present a financial report covering the first quarter of Fiscal Year 2025. Clarke Gibson will provide tonnage and odor reports. Agenda packet attachments include the financial report and the tonnage report.