



RESOLUTION

WHEREAS, the City of Lynchburg currently operates a convenience center for the drop off of solid waste by residents of the City, which includes a set of scales to weigh vehicles, on the closed Concord Turnpike landfill property owned by the Authority; and

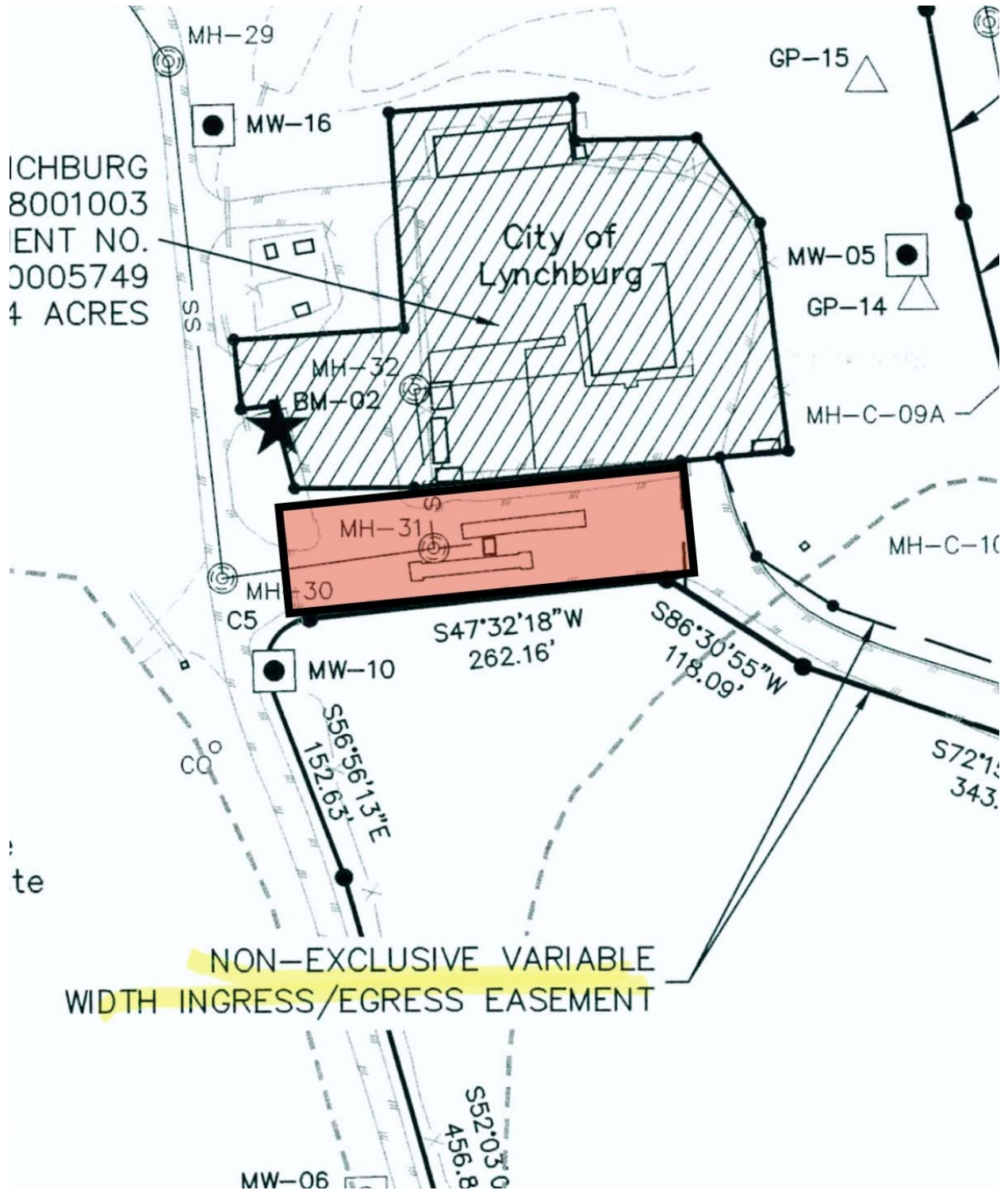
WHEREAS, the City of Lynchburg has expressed a desire to take over the operation of the scales and has requested that the Authority transfer the operation and property that includes the scales and convenience center to the City.

NOW THEREFORE, BE IT RESOLVED by the Board of the Region 2000 Services Authority that the Authority agrees to transfer the property at the closed Concord Turnpike landfill, as shown generally on the attached drawing selected from the plat sealed on October 20, 2016, titled "Exhibit A – Compiled Closure Plat, Region 2000 Services Authority" to the City of Lynchburg, along with any access easements necessary for the City to access such property, and that the Authority will stop operating the scales and turn that operation over to the City as of November 1, 2024, that the staff of the Authority shall take all steps to accomplish such property transfer, and further, that the position of scale operator be eliminated

Adopted this 23rd day of October 2024.

Chair

LYNCHBURG
8001003
ENT NO.
0005749
4 ACRES



NON-EXCLUSIVE VARIABLE
WIDTH INGRESS/EGRESS EASEMENT